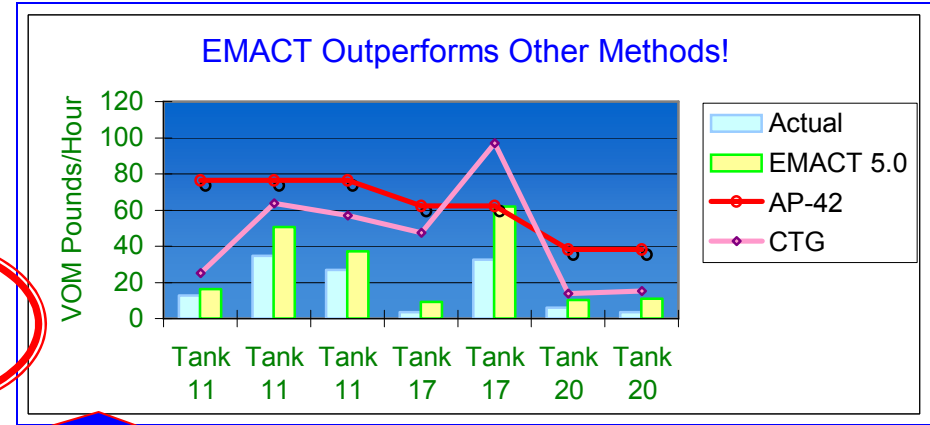


With Updated Features Including:

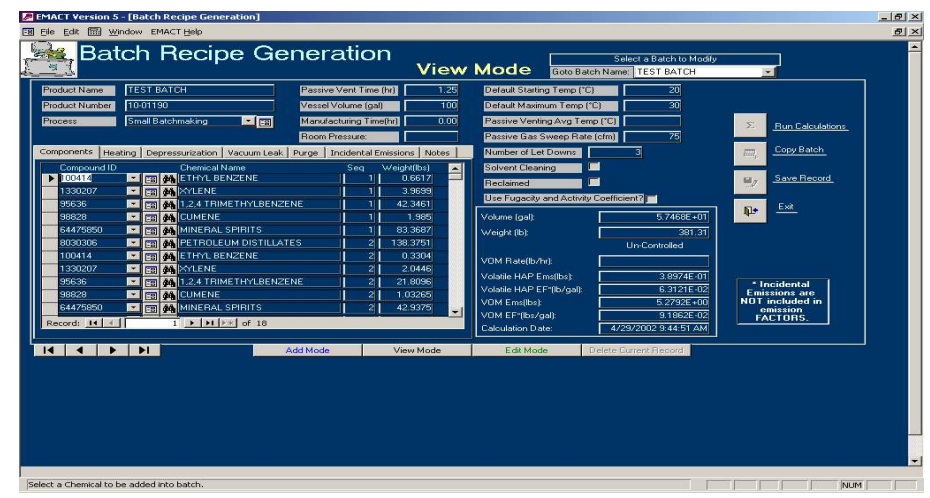
- Emissions Calculations Based on User Definable **Continuous Operations** Emission Factors
- Enhanced Batch Operations Capabilities:
 - **Vacuum Distillation** Emissions
 - User Selectable Calculation Methods for **Depressurization**
 - CTG
 - “Hatfield Equation”
 - Alternative method as proposed in Environmental Protection magazine (J.A. Peress, May 2002)
 - User-Selectable Empirical Active Venting **Headspace Saturation Models** (see chart)
 - Conditions outside of model boundaries default to CTG
 - Not selecting “Greenfield Method” defaults to CTG
- Provision for Capturing **Open Tank Emission Losses**
 - Based on estimated flow headspace displacement
 - Incorporates time and temperature
 - Can utilize factory input data

For Large and Small tanks



Results show blind production tests results¹. Vessel sizes:

- Tank 11: 2000 gallons, Free Volume 1000 gallons
- Tank 17: 1333 gallons, Free Volume 600 gallons
- Tank 20: 1333 gallons, Free Volume 500 gallons



EMACT Batch Recipe Generation Screen

¹ Test utilized Greenfield’s Headspace Saturation Empirical Models for multi-component batches. Batches consisted of greater than ten (10) species each. Vent Configuration: Lid mounted six-inch flange hard-nined 3 ft² (square) additions hatch. USEPA test methods